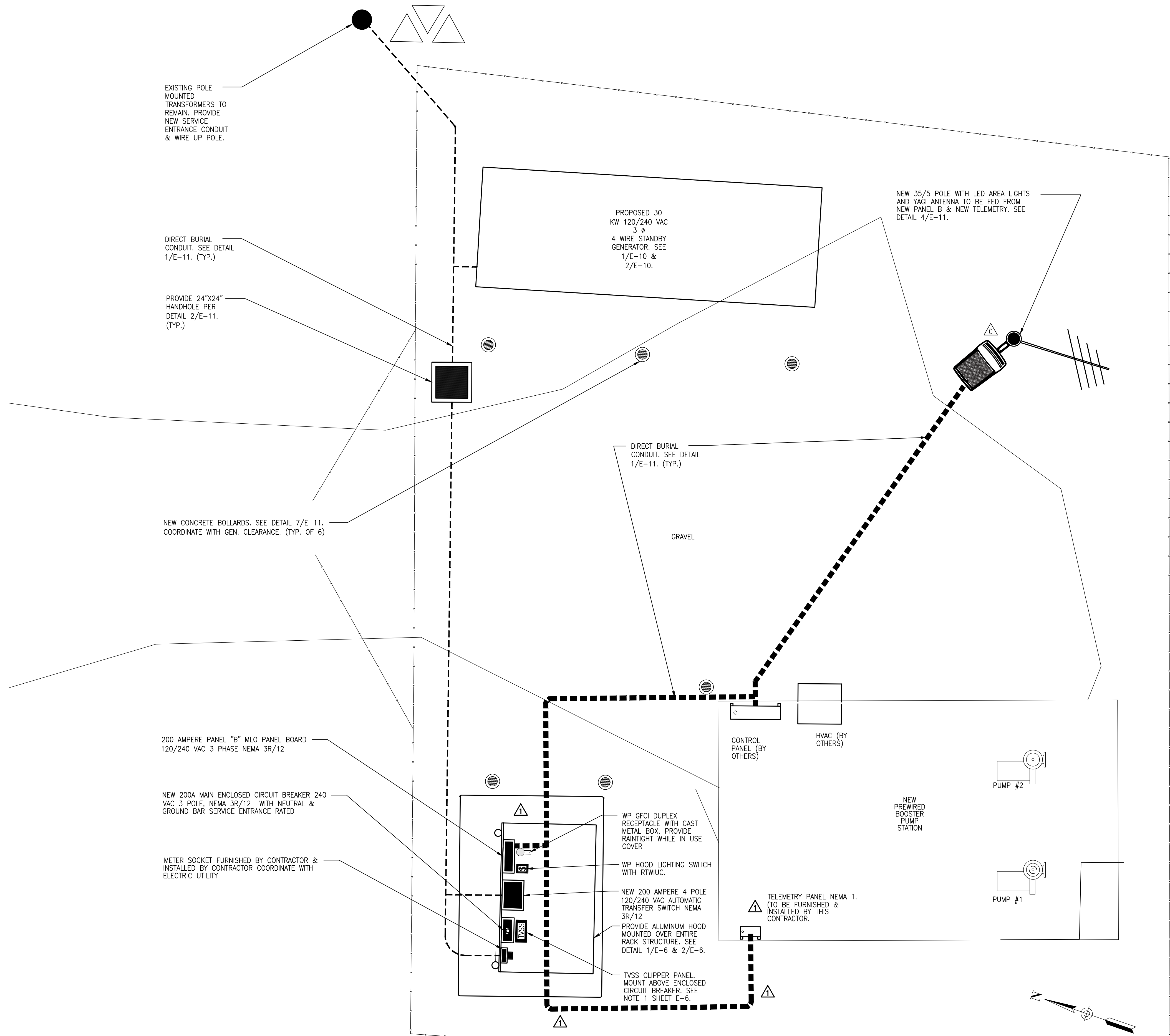


C:\Users\vbos\Dropbox\Cad\1676\Drawings\LD6341 booster pump stations.dwg Last Plotted by: ASHLEY WINDHAM for Green Engineering on Wednesday, March 19, 2025 @ 12:23:25 PM



CONNECTED LOAD				
EQUIP.	LOAD	VOLTS/PH	KW	STARTER
PUMP #1	2 HP	230 V/3 Ø	1.8 KW	VFD IN CONTROL PANEL
PUMP #2	2 HP	230 V/3 Ø	1.8 KW	VFD IN CONTROL PANEL
A/C			5.36 KW	IN BPS
MISC.			1 KW	
TOTAL	4 HP		9.96 KW	IN CONTROL PANEL

- LIGHTING FIXTURE SCHEDULE**
(ALL NEW FIXTURES SHALL BE UL LABELED)
(ALL FIXTURES SHALL BE SUPPLIED WITH LAMPS)
- △ DOUBLE SIDED (2) LED SHOEBOX SHARP CUTOFF LUMINAIRE. PROVIDE AS (2) LED VIPER AREA LIGHTS 4" SQUARE STRAIGHT ARM TO ATTACH TO BRACKET ARM. TYPE 4 WIDE LIGHT DISTRIBUTION. 122.1 WATTS, 15,574 LUMENS. 120 VAC 5,000K 700MA. PROVIDE SURGE PROTECTION, DARK BRONZE FINISH. PROVIDE (2) BRACKET ARMS TO ATTACH TO ROUND WOODEN POLE. USE BEACON VP MICROSTRIKE 1 160L 115 5K7 4W UNV-DB-A_ OR EQUAL BY HUBBELL OR KIM.
 - △ PROVIDE LED HOOD LIGHT 120 VAC. 30 WATTS. PROVIDE 4 FOOT LENGTH ACRYLIC LENS 6,200 LUMENS & WATER TIGHT HUBS. USE H.E. WILLIAMS 96-4-L62/830-H1AFR-WET1.
 - △ SINGLE SIDED (1) LED SHOEBOX SHARP CUTOFF LUMINAIRE. PROVIDE AS (1) LED VIPER AREA LIGHTS 4" SQUARE STRAIGHT ARM TO ATTACH TO BRACKET ARM. TYPE 4 WIDE LIGHT DISTRIBUTION. 122.1 WATTS, 15,574 LUMENS. 120 VAC 5,000K 700MA. PROVIDE SURGE PROTECTION, DARK BRONZE FINISH. PROVIDE (2) BRACKET ARMS TO ATTACH TO ROUND WOODEN POLE. USE BEACON VP MICROSTRIKE 1 160L 115 5K7 4W UNV-DB-A_ OR EQUAL BY HUBBELL OR KIM.

1 NEW HOLLAND BOOSTER PUMP STATION ELECTRICAL SITE PLAN
E-5 ENLARGED SITE PLAN 3/8"=1'-0"

Ronald E. Pledger

 SEAL C-0416
 SEAL 11654
 ENGINEER
 RONALD E. PLEDGER, P.E.

11/6/2025 #1676 LD6341

DP
 ELECTRICAL DESIGN BY:
DIBBLE & PLEDGER, P.A.
 222 WEST MAIN STREET, WASHINGTON N.C. 27889
 PHONE : (252) 946-3320 FAX: (252) 946-5160
 E-MAIL: rpledger@dibbleandpledger.com

RELEASED FOR CONSTRUCTION

GREEN ENGINEERING
 WATER, WASTEWATER, SURVEYING, PLANNING, PROJECT MANAGEMENT
 NORTH CAROLINA FIRM LICENSE: P-0115
 303 GOLDSBORO STREET EAST, P.O. BOX 609 WILSON, N.C. 27893
 TEL (252) 237-5365 FAX (252) 243-7489 OFFICE@GREENENG.COM

HYDE COUNTY PUBLIC UTILITIES
BOOSTER PUMP STATIONS
 TOWN / CITY NAME COUNTY, NORTH CAROLINA

NEW HOLLAND BOOSTER PUMP STATION ENLARGED PLAN

REVISION	DATE	BY	DATE
△ ADDENDA #1 SCADA	3/19/25	REP	October 30, 2023

GRAPHIC SCALE

CLIENT CODE: XXXXX
 JOB NUMBER: XX-XXX
 FIELD BOOK: XXX
 CADFILE: LD6341.dwg
 ASCII FILE:
 LAST MODIFIED: 30-Oct-23
 MODIFIED BY: XXX

SHEET NO. E-5 OF 11